



MONTHLY MEMBERSHIP PROGRESS REPORT

Results as of: 5/31/2016

Multiple District 26

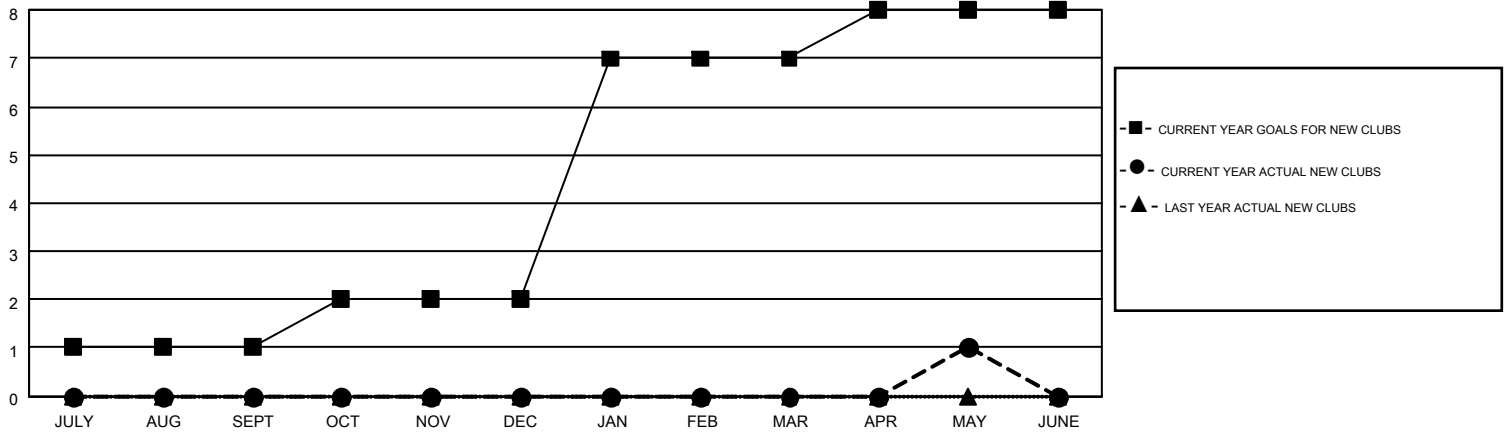
LOCATION: MISSOURI

GMT: HAL GRIFFIN

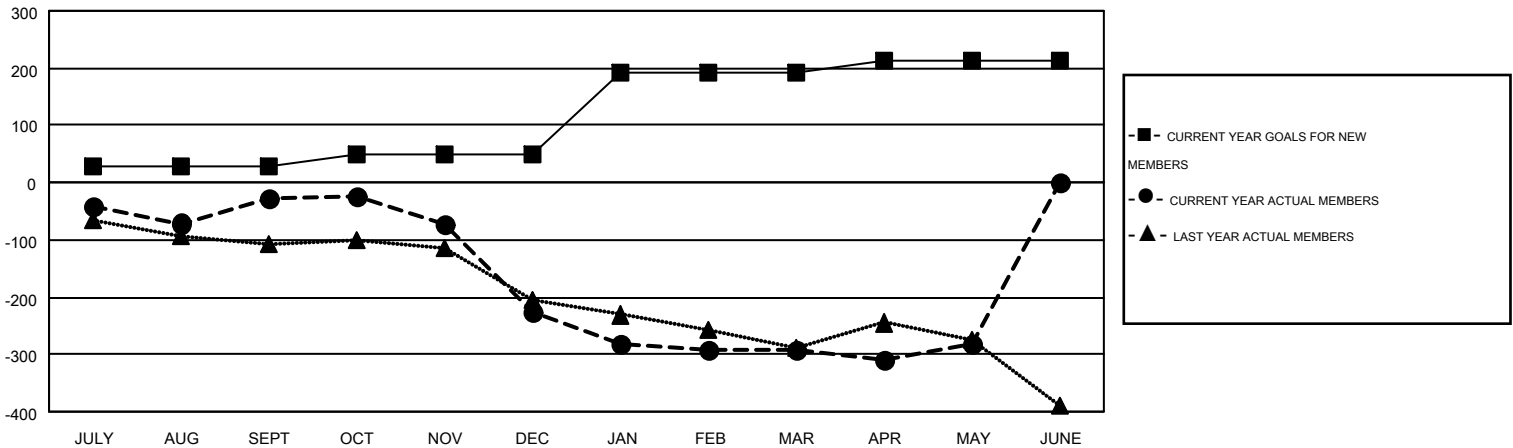
GMT CA 1

Clubs					Members				
RESULTS FOR 2015-2016					RESULTS FOR 2015-2016				
QUARTER	NEW CLUB GOAL	NEW CLUBS	DROPPED CLUBS	NET GAIN/LOSS	QUARTER	NEW MEMBER GOAL	CHARTER AND NEW MEMBERS ADDED	DROPPED MEMBERS	NET GAIN/LOSS
JULY/AUG/SEPT	1	0	3	-3	JULY/AUG/SEPT	29	233	261	-28
OCT/NOV/DEC	1	0	5	-5	OCT/NOV/DEC	21	140	339	-199
JAN/FEB/MAR	5	0	2	-2	JAN/FEB/MAR	143	200	266	-66
APR/MAY/JUNE	1	1	0	1	APR/MAY/JUNE	19	179	169	10

GOALS AND ACTUAL NEW CLUBS CUMULATIVE



GOALS AND ACTUAL MEMBERS CUMULATIVE



DROPPED CLUBS: 10	206 CLUBS OF 352 ADDED 1 OR MORE NEW MEMBERS	<u>GENDER DISTRIBUTION</u>	
<u>DROPPED MEMBERS</u>		MALE	6,850 (75.32%)
DECEASED	133	FEMALE	2,245 (24.68%)
CLUB CANCELLED	34	CLICK HERE FOR HEALTH ASSESSMENT DATA	
OTHER	865	FAMILY UNIT MEMBERS	1,520
TOTAL	1,032	HEAD OF HOUSEHOLD	743
		NON-HEAD OF HOUSEHOLD	777